



Matchmaster

For the Best

O2MM-MDU75B INSTRUCTION MANUAL

Four Signal Directors

1) Fold and clip the four signal directors into place. Ensure each director clips in securely. One in front of each driven element as per figure 1 and 2.

Figure 1

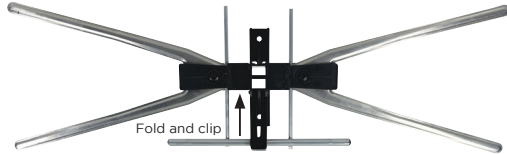
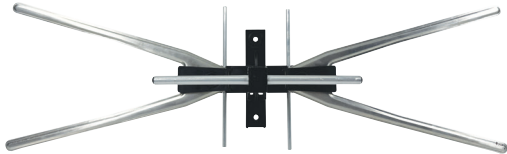
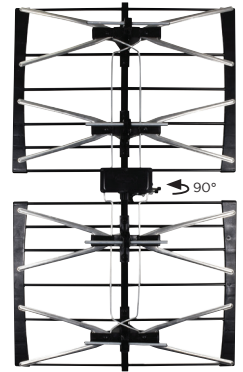


Figure 2



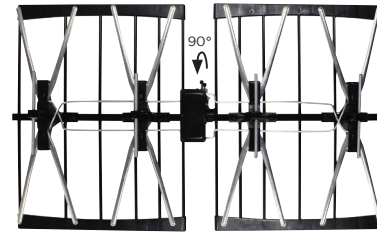
Horizontal Mounting

2a) Rotate the 'stand-off bracket' 90°, so it is positioned at a right angle facing away from the antenna, ready to attach to the mast. Insert supplied bolt and wing nut through the bracket attachment point and tighten. Also, tighten the pre-installed bolt and wing nut.



Vertical Mounting

2b) For vertical mounting, unbolt the two bolts on the mounting bracket, slide the clamp assembly off the mounting arm, rotate 90°, then slide back onto the mounting arm and tighten both bolts to lock into place.



3) Attach the antenna to the mast using the U-bolt and point to your nearest transmitter. Slide the rubber boot seal onto your coaxial cable. Strip the coaxial cable, attach the connector provided, and then connect to the antennas balun. Fix the coaxial cable down the mast using UV-grade insulation tape and cable ties.