



THE PURPLE BOX

PRODUCT CODE: PURPLEBOX

Data sheet PAGE 1

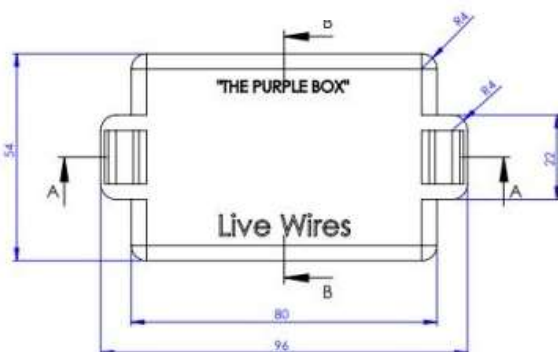
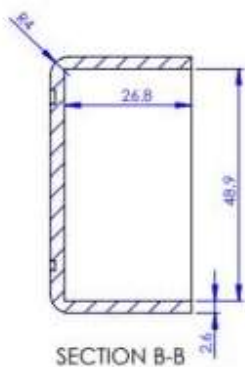
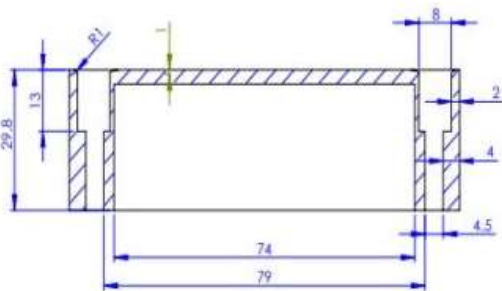
All measurements in millimeters
 Overall cut out for a tile to slide over
 the top of The Purple box is 100mm
 wide by 60mm tall
 ABS PLASTIC

THE PURPLE BOX

The Purple Box is a live wire cover that is designed to fit all generic types of mounting plates and boxes that are commonly used in Australia, that are generally referred to as; C-clips, Stud plates, Wall boxes, Plaster plates and can also be mounted with screws and wall plugs by itself.

This product resolves a lot of common issues found within the electrical industry during renovations and alterations at domestic and commercial properties. Which leaves people exposed to hazards and contractors exposed to fines.

This product allows the electrician to cover normally exposed live ends at power points and light switches, which means less climbing in the roof for disconnections, and also allows other finishing trades to work safely and finish their portion of the work to a better standard around the purple box, allowing for a very easy final fit off for the electrician.





THE PURPLE BOX

PRODUCT CODE: PURPLEBOX

Data sheet PAGE 2

Instructions for use

Secure The Purple Box to C-clips, Stud plates, Wall boxes, Plaster plates and walls directly with the use of screw fixings through the side penetrations of The Purple Box.

The Purple Box is an Ip4x rated fitting so it can be used to cover/enclose Live wiring. Only Licensed electricians should remove The Purple Box once secured to a wall or ceiling whilst ensuring all relevant isolation procedures have been followed.

IP4x rating

The Purple Box is Ip4x rated and designed to be used as an electrical barrier as per clause 1.5.4.4 in AS/NZS3000:2018

IPx4 rating

Maintain Ipx4 rating in water zones around showers and baths etc via the use of silicone/ caulking Ensure silicone/caulking has covered and sealed the screw penetrations to the sides of The Purple Box and any areas of the wall finish that don't meet the The Purple Box side walls as it inserts past the wall surface.

When completion of sealing with silicone/caulking is complete and dry The Purple Box is then rated at IP44

Areas requiring protection outlined in table 6.1 in AS/NZS3000:2018

TERMS, CONDITIONS OF USE AND DISCLAIMERS

By Purchasing this product and/or using this Product the user agrees and acknowledges to the terms, conditions and disclaimers as set out below:

The Product known as "The Purple Box" is a Live wire cover,

In association with the product, THE PURPLE BOX WA PTY LTD makes no warranties of any kind, either express or implied, including but not limited to warranties of merchantability, fitness for a particular purpose, of title, or of noninfringement of third party rights.

Use of the product by a user is at the user's risk regardless of being a licensed person in any field or profession of any kind or not.

The installer of the product must deem the product suitable for use in the application they use it in.

The Company takes no responsibility for any harm or injury sustained by a person by use /using of the product in any way, shape or form

This product is classed as a consumable and is known to break down after several uses, the user shall determine if it is fit for purpose and suitable for use before each use.



THE PURPLE BOX

PRODUCT CODE: PURPLEBOX

Data sheet PAGE 3



**COMPLIANCE
ENGINEERING**
BMC Product Safety Environmental Testing

90 Indian Drive, Keysborough, Victoria 3173, Australia
Telephone: +61 3 9763 3079
Email: info@compeng.com.au
Web: www.compeng.com.au

COMPLIANCE CERTIFICATE

This last report is not to be reproduced except in full, without written approval of Compliance Engineering Pty Ltd.

Client Contact: Jonathan Reindl
The Purple Box Pty Ltd
Phone: 0402 604 363
Email: admin@lumoselectricalperth.com.au

Test Sample: The Purple Box

Reference: IEC 60529: 2004
Degrees of protection provided by enclosures (IP Code)

Summary Result: IP44 requirements
Water ingress test (Table 2 & Section 14.2.4): **Pass**
1 mm probe ingress test (Table 1 & section 12.2): **Pass**

Test Date: 19th May 2023

Tests Performed by: Ben Fitzgibbon
Compliance Engineering Pty Ltd
90 Indian Drive, Keysborough
Victoria, Australia 3173
Telephone: +61 3 9763 3079
Email: info@compeng.com.au

The Purple Box complies with the IP44 requirements of AS 60529:2004: Degrees of protection provide by enclosures (IP Code).

		23 rd May 2023
Prepared: Ben Fitzgibbon Test Engineer Compliance Engineering Pty Ltd	Approved: Andrew Burden Technical Manager Compliance Engineering Pty Ltd	Date